

**omga**   
**-stop**™ *One Stop  
Ahead...*

**omga** 



*Numerically Controlled Positioner*



# Throw That Tape Measure Away!



**INCLUDES  
ALL  
SOFTWARE  
VERSIONS!**

#### Other Accessories:

- Various types of stop assemblies that can be combined with the carriage.
- Complete safety kit to prevent interference of the OMGA Stop™ with the combined machines.

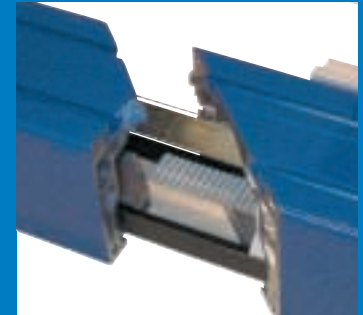
The OMGA Stop™ numerically controlled length stop is designed to fulfill a wide range of requirements. It is perfectly suited for many OMGA machines or can be used with a wide variety of other machines.

**ALL-INCLUSIVE SOFTWARE** included in the following models are:

- Length stop
- Length stop for frames
- Programmable pusher

OMGA Stop is available in different working lengths and can be fitted with any support tables to meet specific requirements.

- OMGA Stop table
- Extension kit for OMGA Stop tables for handling wide pieces
- Roller table for handling heavy pieces



Cutaway of Fence

**OMGA Stop™ LETS  
YOU MEASURE  
PRODUCTIVITY  
WITH SOMETHING  
OTHER THAN A  
TAPE MEASURE**

**BANISH MANUAL  
STOP PROBLEMS  
WITH PRECISE,  
AUTOMATIC  
MEASURING  
AND FEED**

Throw that tape measure away! With OMGA Stop's precision positioner you'll get fast, trouble-free measuring and production runs — cut after precise cut. Now you can measure productivity with peace of mind knowing OMGA Stop is on the job. Our innovative positioning technology lets you save time, work — and make more money. The OMGA Stop can be matched to any of our performance-proven mitre, chop, frame cut or radial arm saws. It also can be quickly adapted to other brands of saws. Get the full measure of OMGA's more than 40-year commitment to the industry. Get OMGA Stop working for you!



Detailed Inside View  
of the OMGA Stop™

## UNIVERSAL ADAPTABILITY



**OMGA Stop™ with T 421**  
(Up-cut saw)



**OMGA Stop™ with V 235**  
(Double mitre saw)



**OMGA Stop™ with RN 700**  
(Radial arm saw)



**OMGA Stop™ with T 50-350**  
(Industrial mitre saw)

## AVAILABLE USEABLE LENGTHS



## Features of the OMGA Stop™

### HARDWARE

- Backlighted display (two alphanumeric lines)
- Keyboard with 22 multi-function keys
- Internal card\* for floppy disk(s)
- RS232 serial port (PC)
- RS485/232 serial port (Barcode reader\* or printer\*)
- USB Drive

### SOFTWARE

- The system can operate on a metric or imperial basis (even fractions of an inch) and in five languages (US-IT-ES-FR-D)
- Complete fault analysis and error message system
- Available in various versions to fulfill the user's needs

- **Memory:** maximum capacity of 500 lines that can be used with great versatility (i.e.: 10 programs of 50 lines each or five programs of 100 lines). Each program can contain information pertaining to lengths and number of pieces. It is possible to work with incremental, absolute or with pre-established sequences.

# TECHNICAL DATA



## Carriage Stroke



Transmission with cogged belt features a core made of steel cables. The carriage rides along interchangeable hardened steel tracks for added accuracy and durability.

	Right Hand	Left Hand
OMGA Stop™ 6	AC052000020000	AC020000020000
OMGA Stop™ 10	AC052000040000	AC020000040000
OMGA Stop™ 13	AC052000050000	AC020000050000
OMGA Stop™ 16	AC052000060000	AC020000060000
OMGA Stop™ 22	AC0520000310000	AC0200000310000
OMGA Stop™ 30	AC0520000340000	AC0200000340000

OMGA Stop™ 6:	A = 108"	B = 24"	C = 19"	Lbs. 109
OMGA Stop™ 10:	A = 147"			Lbs. 133
OMGA Stop™ 13:	A = 187"			Lbs. 158
OMGA Stop™ 16:	A = 226"			Lbs. 182
OMGA Stop™ 22:	A = 293"			Lbs. 223
OMGA Stop™ 30:	A = 392"			Lbs. 283

Rating: 400 W  
 Rated Voltage: 110/230 V  
 Rated Current: 3.64/1.74 A  
 Frequency: 60 HZ

Feed Speed: 200 ft/min  
 Pushing Capacity on Sheet Metal Tables = 100 lbs.  
 Pushing Capacity on Roller Tables = 175 lbs.

Operating Temperature = 41° - 113° F  
 Humidity (without condensation) = 5% - 85%

## OMGA Stop Roller Table & Legs — 14" Width

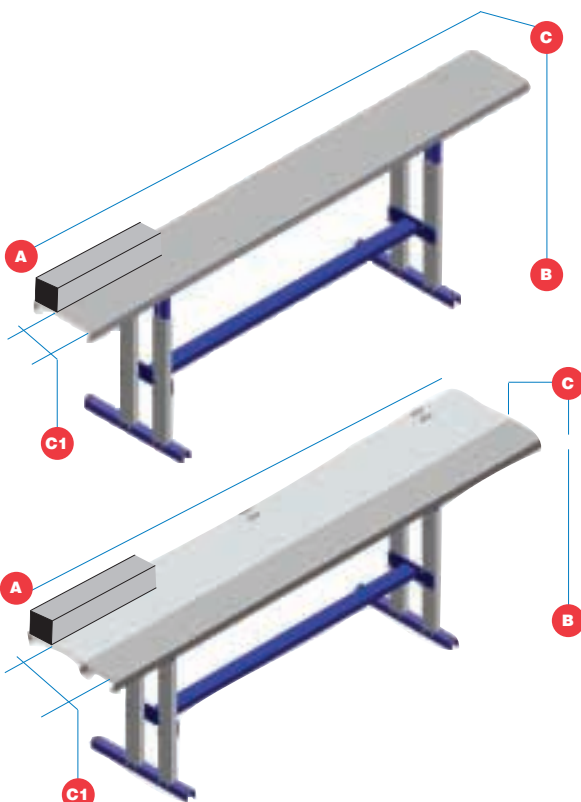
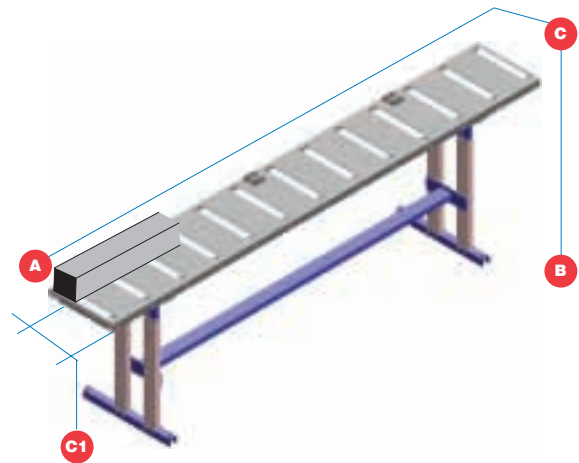
OMGA Stop™ 6:	A = 118"	B = 32-39"	C = 12"	Lbs. 243	AC1060030020000
OMGA Stop™ 10:	A = 158"			Lbs. 291	AC1060030040000
OMGA Stop™ 13:	A = 197"			Lbs. 412	AC1060030050000
OMGA Stop™ 16:	A = 236"			Lbs. 485	AC1060030060000
OMGA Stop™ 22:	A = 276"			Lbs. 529	AC1060030310000
OMGA Stop™ 30:	A = 394"			Lbs. 776	AC1060030340000

C1 = 7.5"

## OMGA Stop Roller Table & Legs — 24" Width

OMGA Stop™ 6:	A = 118"	B = 32-39"	C = 24"	Lbs. 243	AC1070030020000
OMGA Stop™ 10:	A = 158"			Lbs. 291	AC1070030040000
OMGA Stop™ 13:	A = 197"			Lbs. 412	AC1070030050000
OMGA Stop™ 16:	A = 236"			Lbs. 485	AC1070030060000
OMGA Stop™ 22:	A = 276"			Lbs. 529	AC1070030310000
OMGA Stop™ 30:	A = 394"			Lbs. 776	AC1070030340000

C1 = 19"



## OMGA Stop Table & Legs

OMGA Stop™ 6:	A = 106"	B = 32-39"	C = 14"	Lbs. 146	AC0900030020000
OMGA Stop™ 10:	A = 145"			Lbs. 174	AC0900030040000
OMGA Stop™ 13:	A = 184"			Lbs. 249	AC0900030050000
OMGA Stop™ 16:	A = 224"			Lbs. 298	AC0900030060000
OMGA Stop™ 22:	A = 290"			Lbs. 351	AC0900030310000
OMGA Stop™ 30:	A = 389"			Lbs. 496	AC0900030340000

C1 = 9"

## OMGA Stop Table & Legs Width Extension Kit

OMGA Stop™ 6:	A = 106"	B = 32-39"	C = 8"	Lbs. 62	AC0260030020000
OMGA Stop™ 10:	A = 145"			Lbs. 82	AC0260030040000
OMGA Stop™ 13:	A = 184"			Lbs. 104	AC0260030050000
OMGA Stop™ 16:	A = 224"			Lbs. 135	AC0260030060000
OMGA Stop™ 22:	A = 290"			Lbs. 135	AC0260030310000

C1 = 17"

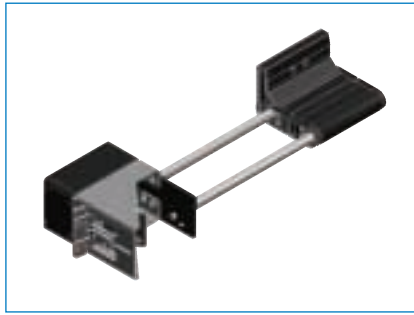
- Adjustable feet with three preset positions
- Also for roller tables



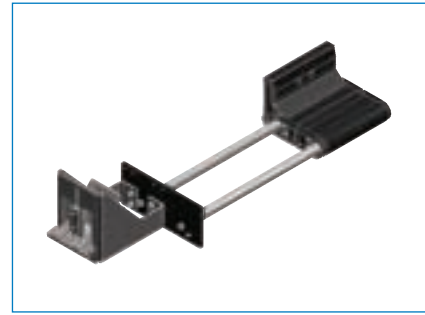
# OPTIONAL ACCESSORIES



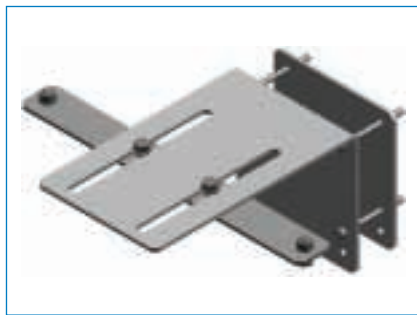
Code: AC1540030000000 (right hand)  
Code: AC1540150000000 (left hand)  
**Stop Bracket with Shock Absorber**



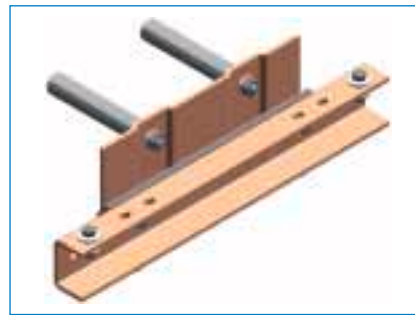
Code: AC1620030000000  
**Stop Bracket with Horizontal Tail Clamp**



Code: AC1610030000000  
**Stop Bracket with Vertical Tail Clamp**



Code: AC1110200000000  
**Bracket for Radial Arm Saws**



Code: AC0250030000000  
**Bracket for Mitre Saws**



Code: AN1280430000000  
**Automation Kit for Radial Saws**



Code: AN1030210000000  
**Safety Kit for T 421**



Code: AC1030000000000  
**Standard Safety Kit**



Code: AN1010370000001  
**45° OMGA Stop™ "V 235 FNC" Backstop**



**OMGA Stop™ with T 421**  
**(Up-cut saw)**



**OMGA Stop™ with V 235**  
**(Double mitre saw)**



**OMGA Stop™ with RN 700**  
**(Radial arm saw)**



**OMGA Stop™ with T 50-350**  
**(Industrial mitre saw)**



OMGA, Inc.  
3705 William Richardson Drive  
South Bend, IN 46628  
Toll Free: (800) 233-6642  
Phone: (574) 243-0120 • Fax: (574) 243-0216  
E-mail: info@omgainc.com  
Website: www.omgainc.com

Company with Quality System  
Certified by DNV



Information and data provided may be  
subject to change without notice.

Distributed By:

--